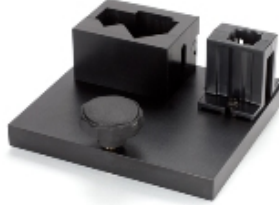


SPECTROPHOTOMETER-72 SERIES * ACCESSORIES



630.204
10x10mm path length
cuvette holder



637.071
10mm square & 16/24mm dia.
cuvette & test tube holder



630.005
10-100mm path length
cuvette holder



630.304
Micro-cuvette holder
with reduced aperture



725.201
Heated cell 10x10mm cuvette
holder with EU power lead

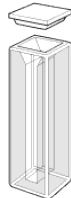


SMP50/PRINTER
External printer
with EU power lead



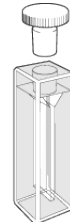
1/SX/10

**STARNA Macro
Cuvettes * G & Q**



9/G/10

**STARNA Semi-Micro
Cuvettes * G & Q**



01/D/02/8S

**STARNA Micro
Cuvettes * SOG & Q**



16-R/50/Q/10/Z8.5

**STARNA Sub-Micro
Cuvettes * Q**



**STARNA Reference Material
Starna Green
RM-25G ~ 500G**



**STARNA Reference Material
Neutral Density & HG Filters
RM-1N3N5DHG**



**STARNA Reference Material
Combined Neutral Density & HG Filter
RM-HG1ND**