

CI-602

■ Narrow Gauge Root Imager

A portable minirhizotron system compatible with 2-inch diameter tubes

Capture high-resolution, digital images of living roots in soil over multiple growing seasons with the CI-602 Narrow Gauge Root Imager. Designed for use with 2-inch tubes, users now have the ability to work within new or existing tube installations.

CI-602 Narrow Gauge Root Imager Features



Applications

- ▶ Plant Physiologists measure root responses to biotic and abiotic changes.
- ▶ Ecologists measure the architecture of roots in wetland plants.
- ▶ Agronomists track the formation of new roots to time nutrient applications.

Product Features

- ▶ High-resolution scanner head
- ▶ White calibration tube
- ▶ Collapsible indexing handle for consistent, repeatable measurements at any depth
- ▶ Six 1-meter clear acrylic tubes included with scanner package
- ▶ Handheld tablet computer preloaded with CI-602 operational software, as well as RootSnap! Image Analysis Software



- ▶ Compatible with transparent root tubes which have an inner diameter of two inches (including Bartz tubes).
- ▶ Comes with six durable transparent root tubes:
Available in lengths of 105cm or 182cm
Made of extruded acrylic
Feature custom-machined watertight bottom plug and insulated top cap to prevent moisture build-up in the tube
- ▶ Durable and field-ready
- ▶ Lightweight and easy to transport to any location
- ▶ Suitable for sites with root tubes across a range of treatments or conditions
- ▶ Controlled and powered by MS Surface tablet pre-loaded with RootSnap Analysis Software. Use RootSnap to quickly calculate parameters from images including total and individual root: length, area, volume, diameter, branching angle

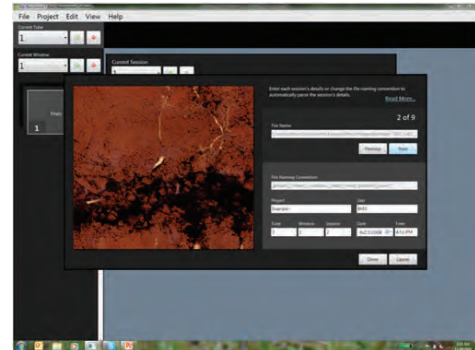
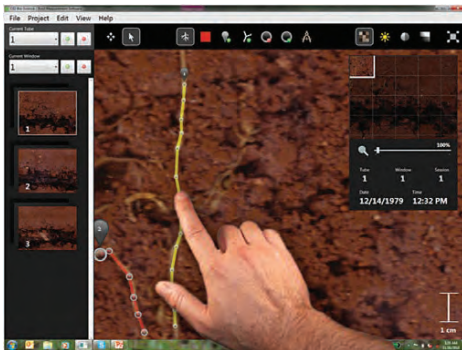
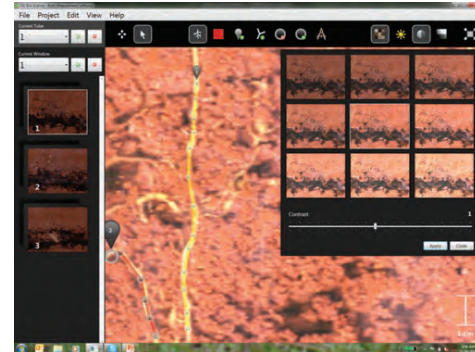
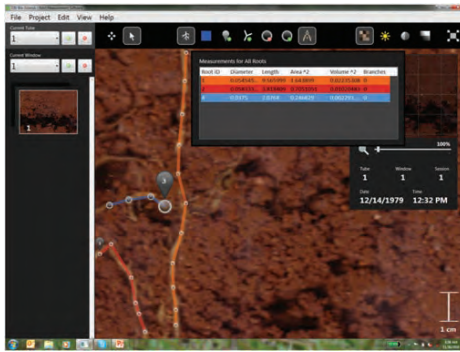


Image size	21.59 cm x 18 cm (8.5" x 7.1")
Scan speed	~30 seconds (depending on selected resolution)
Image resolution	Up to 1200 DPI
Interface	USB Cable, Wi-Fi, Bluetooth
Scanner head	35.9 cm long x 4.6 cm diameter (14.125" x 1.8")
Control box dimensions	18 cm x 7.5 cm x 5 cm (7.125" x 3" x 2")
Total weight	1950g or 4.3lbs
ROOT TUBE DIMENSIONS	
Inner diameter	5 cm (2")
Outer diameter	5.7 cm (2.25")
Wall thickness	3.2 mm (.125")
Standard length	105 cm (41.3")



CI-690 RootSnap! Image Analysis Software

Our RootSnap! Image Analysis Software makes it simple to evaluate root parameters including length, width, volume, & diameter. Researchers and crop consultants use RootSnap! to monitor root growth, disease, dynamics and behavior over time. With an intuitive user interface, mapping roots using the multi-touch feature and proprietary "Snap to Root" function is smooth and efficient. Users can easily save and export files to Excel for further statistical analysis.



CI-690 RootSnap! Analysis Software Features

- ▶ Measurements of individual and average root length, area, volume, diameter & branching angle
- ▶ Multi-touch interface, optimized for touch-screen
- ▶ Individual roots can be mapped in under 6 seconds
- ▶ Integrated image enhancement
- ▶ Automated "Snap to Root" functionality
- ▶ Comprehensive image analysis package
- ▶ Time-series root analysis feature
- ▶ Intuitive and efficient user interface